

D9., D2., D3 Compressors direct or Y part winding start (AWM/D, AWR, AWY, AWX)

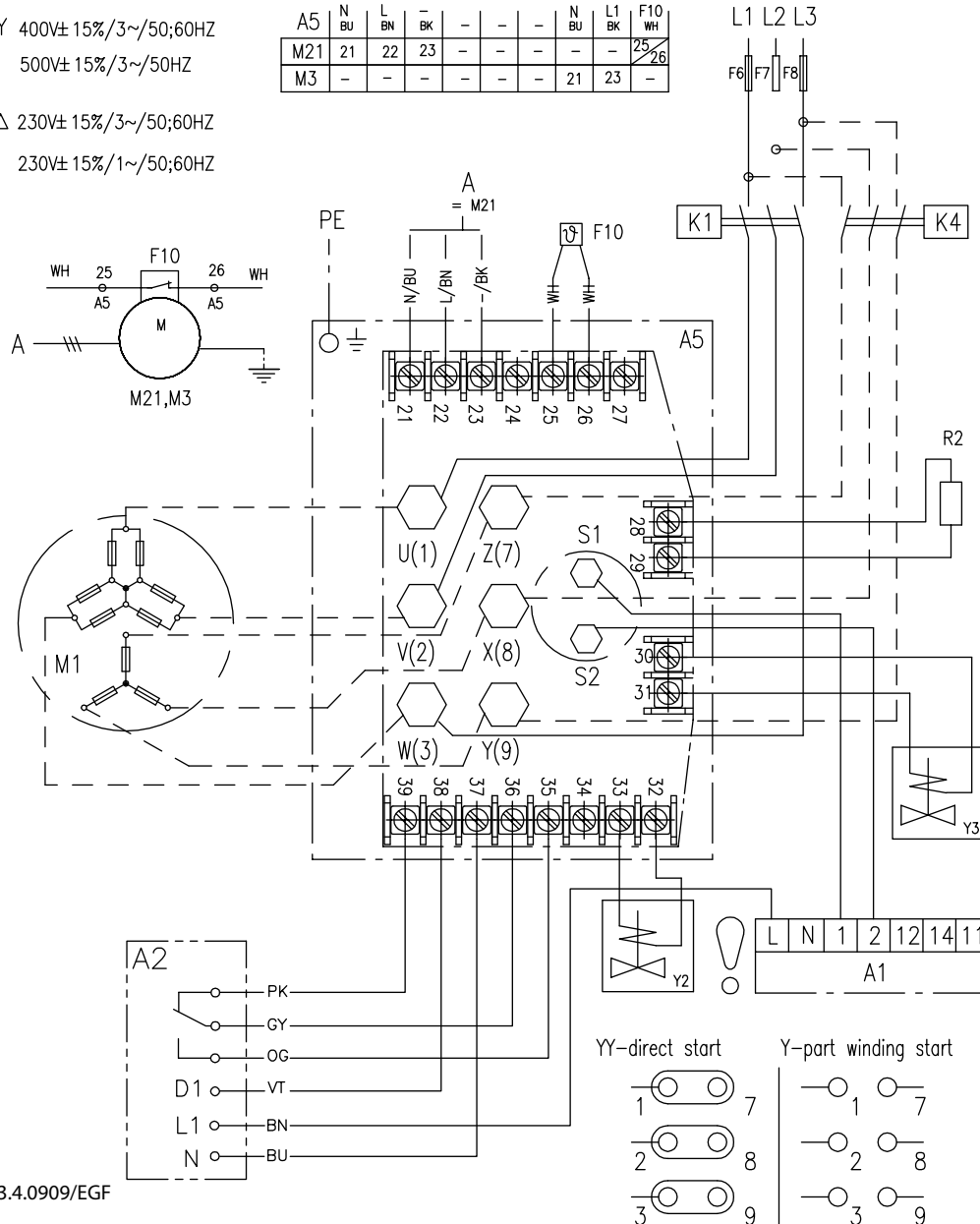
Fans thermoprotected (F10)

Y 400V±15%/3~/50;60HZ
500V±15%/3~/50HZ

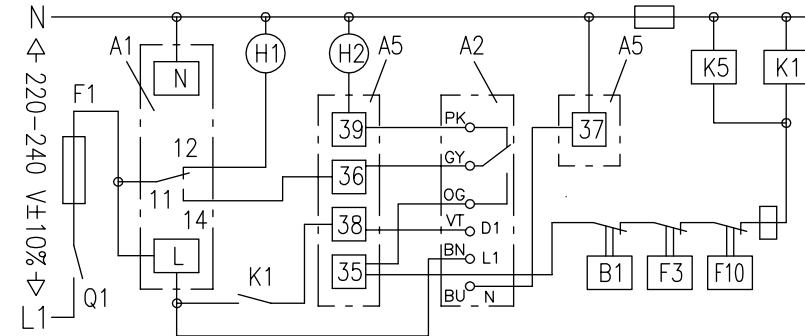
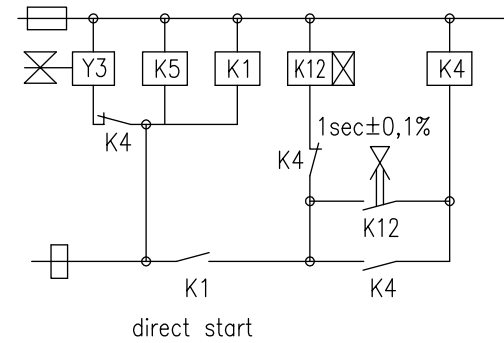
Δ 230V±15%/3~/50;60HZ
230V±15%/1~/50;60HZ

A5	N BU	L BN	- BK	-	-	-	N BU	L1 BK	F10 WH
M21	21	22	23	-	-	-	-	-	25 26
M3	-	-	-	-	-	-	21	23	-

K4 only with
Y-part winding start



recommended control circuit
Y-part winding start



Attention Compressor equipped with protection by thermistors
Connect thermistors only at terminals 1+2 of module A1.
Do not apply mains voltage. See wiring diagram.
Max. thermistor test voltage 3V.
Cold resistance of thermistors ≤ 750 Ω