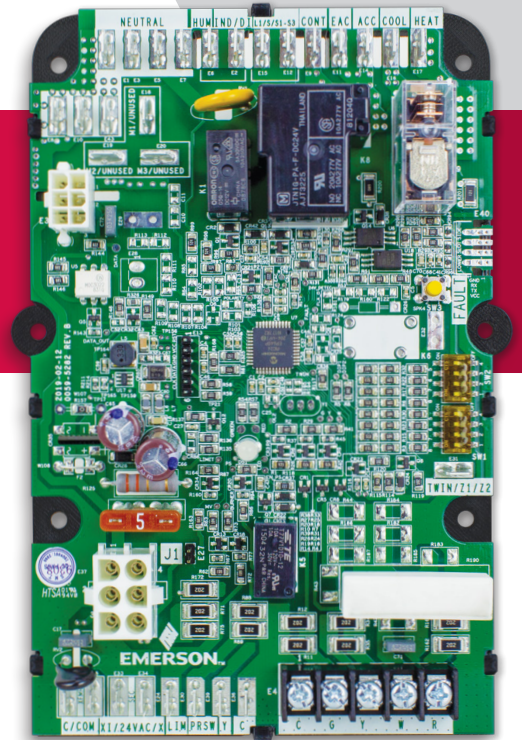


Universal Furnace Electronic Fan Timer

50F06-843

A universal solution that is easy to install, configure, and diagnose



Universal Replacement

Replaces over 150 OEM and competitive part numbers

Works with SmartValve™ systems and other non-integrated modules

* A registered trademark of Honeywell Inc.



Easy Installation

Six mounting hole options

Harnesses with terminal flags for easy wiring

Terminals are labeled to match multiple existing boards

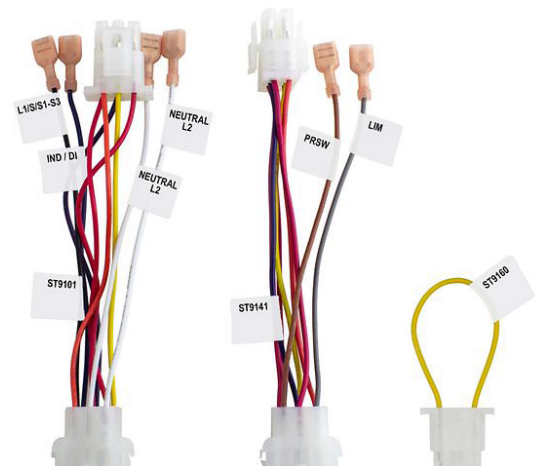
Transformer connections offer 1/4" and 3/16" terminals



Advanced Diagnostics

Tri-Color LED displays status and fault codes

Exclusive fault recall button



50F06-843 - For single stage furnaces with PSC inducer and blower motors

COMPETITIVE COMPARISON

FEATURES	WHITE-RODGERS - 50F06-843	BRAND X
Board Cross-References	150+	48
Standard Mounting Options	2	1
24v Transformer 1/4" Spade Extension Wires	Included	✗
Terminal label ID's cover multiple board versions	✓	✗
Harnesses with terminal flags for easy wiring	✓	✗
Heating & Cooling fan can be operated on single speed (ACC output)	✓	✗
Fan Only (G) can be set to Heating or Cooling speed	✓	✗
1/4" & 3/16" 24v Transformer Connections	✓	✗
Unused Motor / Park Terminals	3	2
Tri-color LED display	Green/Amber/Red	Green Only
Tri-color LED displays Heat/Cool/Fan status	✓	✗
Fault code label	✓	✗
Fault recall & clearing	Simple Push Button	None

SPECIFICATIONS

Electrical Ratings:

Input Low Voltage: 25 VAC 60 Hz

Input Line Voltage: 115/230 VAC 60 Hz

Max Input Current: 800mA @ 25 VAC

Operating Temperature Range:

-40° to 176° F (-40° to 80° C)

Dimensions:

5.0" W x 7.0" L x 1.50" D

1 Year Limited Warranty

TIMING SPECIFICATIONS

POST PURGE	LOCK-OUT TIME	HEAT ON DELAY	HEAT OFF DELAY	COOL ON DELAY	COOL OFF DELAY
5	60 min	30*, 60	60, 120*, 150, 180	4*, 30	30*, 60

All times are in seconds unless noted otherwise

* Default dipswitch settings

CROSS REFERENCE

Honeywell	ST9120G4012	Consolidated Ind.	40403-003	Rheem/RUUD	1011543	JCI/York/Coleman/Evcon	
ST9101A1006	ST9120G4038	406650	45392001	Brands	1011927	2702-300	
ST9101A1014	ST9120U1003		45692001	47-22693-01	1012106	2702-300P	
ST9101A1022	ST9120U1011	Goodman/Amana/	384938001	47-22693-02	1012358	3101237000	
ST9120A1006	ST9141A1002	Janitrol	1138-100	47-22827-01	1014460	3102959000	
ST9120A2004	ST9141A1028	B180911	1138-83-1002A	47-22827-02	1084197	33101237000	
ST9120B1005	ST9141B1001	B18099-11	28M901	47-22827-03	1150489	025-32816-000	
ST9120C1012	ST9150A1003	B1809911S	28M99	47-22827-08	1160192	026-32254-000	
ST9120C1020	ST9150B2000	CARB1809911	28M9901	47-22827-82	1170063	026-34030-000	
ST9120C2002	ST9150B2018	CARL38267	384938-001	47-22827-83	1138-83-200A	031-01237-000	
ST9120C2010	ST9150B2026	ICM	400B0091	47-22828-01	1138-200	031-02959-000	
ST9120C2028	ST9150B2034	ICM270	45692-001	47-22828-02	HQ1008773HW	1138-103	
ST9120C3000	ST9160A1002	AC1015	87H88	47-22830-01	HQ1008786HW	2895-3001	
ST9120C3018	ST9160B1001		87H8801	47-22830-02	HQ1009836HW	331-01237-000	
ST9120C4008	ST9160B1019	Lennox/	R40403001		HQ1009837HW	S1-02532816000	
ST9120C4016	ST9160B1027	Armstrong/	R40403-001	Robertshaw	HQ1009838HW	S1-0263403000	
ST9120C4040	ST9160B1035	Ducane/Excel	R40403002	695-003	HQ1010031HW	S1-03101237000	
ST9120C4057	ST9160B1043	45392-001	R40403-002	ICP/Arcoaire/	HQ1011179HW	S1-031-01237-000	
ST9120C5005	ST9160B1050	20054501	R40403003	Comfortmaker/	HQ1011543HW	S1-03102959000	
ST9120C5013	ST9160B1068	20054502	R40403-003	Heil/Tempstar	HQ1011927HW	S1-031-02959-000	
ST9120D3009	ST9160B1076	2043081	R45392001	1008773	HQ1012106HW	S1-2702-300P	
ST9120G2008	ST9160B1084	20430801	R45392-001	1008786	HQ1012358HW	S1-33101237000	
ST9120G2016	ST9160C1000	40403001	R45692001	1009836	HQ1084197HW	S1-331-01237-000	
ST9120G2024	ST9160C1018	40403-001	R45692-001	1009837	HQ1170063HW		
ST9120G2032		40403002	R45692-001	1009837			
ST9120G4004	Carrier/Bryant	40403-002	X8609	1009838	Weil-McLain		
	CAR20054502	40403003	X860901	1010031	4116000		
				1011179			



Download the WR Mobile app for the latest cross reference data and product information.

