



240RA 12T7VLC

240RA SERIES REFRIGERANT SOLENOID VALVES

The 240RA is a 2-way, normally closed diaphragm valve used for liquid, suction, and hot gas service.

FEATURES

- Single coil family fits all valve sizes
- Can be brazed into the line without disassembly
- PTFE diaphragm for high temperature applications
- Extended ends for easy installation (standard)
- Mounting stud models can be field converted to manual stem
- Field serviceable parts available

SPECIFICATIONS

Maximum Fluid Temperature..... 250°F (121°C)
 Maximum Working Pressure..... 500 psig (35 bar)
 Maximum Operating Pressure Differential 300 psig (21 bar)
 UL/CUL File Number MP604
 Canadian CRN 0C21506.513467890YTN

MODEL NUMBER NOMENCLATURE - Example: 240RA 8T5MVLC

VALVE SERIES	DESIGN SERIES	PORT SIZE	CONNECTION TYPE	CONNECTION SIZE	VALVE CONFIGURATION	*COIL	SEQUENTIAL IDENTIFIER	CUSTOMER SPECIAL	PACK TYPE
240R	A	8	T	5	M	VLC			
Normally Closed Refrigerant Solenoid Valves	Diaphragm Design	In 1/16"	T = ODF Extended Ends	In 1/8"	M = Manual Opening Stem T = Mounting Stud (Omit for Std. Valve)	VLC = Valve Less Coil For Valves with Coil See Coil Nomenclature on Coil Catalog Page	Blank Thru -99	G = Customer Special (Omit for Standard)	B1 = Bulk Pack (Omit for Individual Pack)

* Valves in catalog are shipped without solenoid coils (VLC = Valve Less Coil). See coil pages for coil selection and a complete list of voltage options.

240RA SERIES REFRIGERANT SOLENOID VALVES

VALVE CONFIGURATION	PORT SIZE (IN)	CONNECTION SIZE & TYPE	NOMINAL LIQUID CAPACITY - TONS (kW)						MODEL NUMBER	ITEM NUMBER						
			R-22	R-134a	R-404A / R-507	R-407C	R-448A / R-449A	R-450A / R-513A								
Standard Valve	1/2	5/8" ODF	15.6 (54.9)	12.1 (42.6)	10.3 (36.2)	14.8 (52.1)	15.7 (55.1)	10.8 (37.8)	240RA 8T5VLC	060374						
Standard Valve		7/8" ODF							240RA 8T7VLC	060375						
Standard Valve	9/16	5/8" ODF	23.3 (81.9)	18.0 (63.3)	15.3 (53.8)	22.1 (77.2)	23.4 (82.3)	16.1 (56.5)	240RA 9T5VLC	060376						
Standard Valve		7/8" ODF							240RA 9T7VLC	060377						
Standard Valve		1-1/8" ODF							30.5(107.3)	21.0 (74.0)	20.1 (70.7)	29.0 (102.0)	30.6 (107.7)	21.0 (74.0)	240RA 9T9VLC	060378
Standard Valve	3/4	7/8" ODF	34.9 (122.7)	27.1 (95.3)	23.0 (80.9)	33.2 (116.8)	29.0 (102.0)	24.1 (84.6)	240RA 12T7VLC	060379						
Standard Valve		1-1/8" ODF							240RA 12T9VLC	060380						
Standard Valve	1	1-1/8" ODF	58.0 (203.9)	45.0 (158.3)	38.3 (134.7)	55.2 (194.1)	58.2 (204.8)	40.0 (140.6)	240RA 16T9VLC	060381						
Standard Valve		1-3/8" ODF							240RA 16T11VLC	060382						
Standard Valve	1-1/4	1-5/8" ODF	95.4 (335.5)	70.9 (249.4)	65.7 (231.1)	90.8 (319.3)	95.8 (336.8)	65.8 (231.3)	240RA 20T13VLC	060384						
Standard Valve		2-1/8" ODF							240RA 20T17VLC	060385						
Mounting Stud	1/2	5/8" ODF	15.6 (54.9)	12.1 (42.6)	10.3 (36.2)	14.8 (52.1)	15.7 (55.1)	10.8 (37.8)	240RA 8T5TVLC	040846						
Mounting Stud		7/8" ODF							240RA 8T7TVLC	044860						
Mounting Stud	9/16	5/8" ODF	23.3 (81.9)	18.0 (63.3)	15.3 (53.8)	22.1 (77.2)	23.4 (82.3)	16.1 (56.5)	240RA 9T5TVLC	040848						
Mounting Stud		7/8" ODF							30.5(107.3)	21.0 (74.0)	20.1 (70.7)	29.0 (102.0)	30.6 (107.7)	21.0 (74.0)	240RA 9T7TVLC	043205
Mounting Stud		1-1/8" ODF							240RA 9T9TVLC	044861						

240RA SERIES REFRIGERANT SOLENOID VALVES (CONTINUED)

VALVE CONFIGURATION	PORT SIZE (IN)	CONNECTION SIZE & TYPE	NOMINAL LIQUID CAPACITY - TONS (kW)						MODEL NUMBER	ITEM NUMBER						
			R-22	R-134a	R-404A / R-507	R-407C	R-448A / R-449A	R-450A / R-513A								
Mounting Stud	3/4	7/8" ODF	34.9 (122.7)	27.1 (95.3)	23.0 (80.9)	33.2 (116.8)	29.0 (102.0)	24.1 (84.6)	240RA 12T7TVLC	040850						
Mounting Stud		1-1/8" ODF							240RA 12T9TVLC	043959						
Mounting Stud	1	1-1/8" ODF	58.0 (203.9)	45.0 (158.3)	38.3 (134.7)	55.2 (194.1)	58.2 (204.8)	40.0 (140.6)	240RA 16T9TVLC	042549						
Mounting Stud		1-3/8" ODF							240RA 16T11TVLC	044428						
Mounting Stud	1-1/4	1-3/8" ODF	95.4 (335.5)	70.9 (249.4)	65.7 (231.1)	90.8 (319.3)	95.8 (336.8)	65.8 (231.3)	240RA 20T11TVLC	047761						
Mounting Stud		1-5/8" ODF							240RA 20T13TVLC	047747						
Mounting Stud		2-1/8" ODF							240RA 20T17TVLC	054297						
Manual Stem	1/2	5/8" ODF	15.6 (54.9)	12.1 (42.6)	10.3 (36.2)	14.8 (52.1)	15.7 (55.1)	10.8 (37.8)	240RA 8T5MVLC	040845						
Manual Stem		7/8" ODF							240RA 8T7MVLC	045753						
Manual Stem	9/16	5/8" ODF	23.3 (81.9)	18.0 (63.3)	15.3 (53.8)	22.1 (77.2)	23.4 (82.3)	16.1 (56.5)	240RA 9T5MVLC	040847						
Manual Stem		7/8" ODF							30.5 (107.3)	21.0 (74.0)	20.1 (70.7)	29.0 (102.0)	30.6 (107.7)	21.0 (74.0)	240RA 9T7MVLC	043204
Manual Stem		1-1/8" ODF													240RA 9T9MVLC	045752
Manual Stem	3/4	7/8" ODF	34.9 (122.7)	27.1 (95.3)	23.0 (80.9)	33.2 (116.8)	29.0 (102.0)	24.1 (84.6)	240RA 12T7MVLC	040849						
Manual Stem		1-1/8" ODF							240RA 12T9MVLC	045549						
Manual Stem	1	1-1/8" ODF	58.0 (203.9)	45.0 (158.3)	38.3 (134.7)	55.2 (194.1)	58.2 (204.8)	40.0 (140.6)	240RA 16T9MVLC	042548						
Manual Stem		1-3/8" ODF							240RA 16T11MVLC	044788						
Manual Stem	1-1/4	1-3/8" ODF	95.4 (335.5)	70.9 (249.4)	65.7 (231.1)	90.8 (319.3)	95.8 (336.8)	65.8 (231.3)	240RA 20T11MVLC	046636						
Manual Stem		1-5/8" ODF							240RA 20T13MVLC	046637						
Manual Stem		2-1/8" ODF							240RA 20T17MVLC	046638						

Capacities based on 100°F liquid and 40°F saturated evaporator per ARI standard 760-87. All ratings are based on largest connection size.



Detailed product drawings

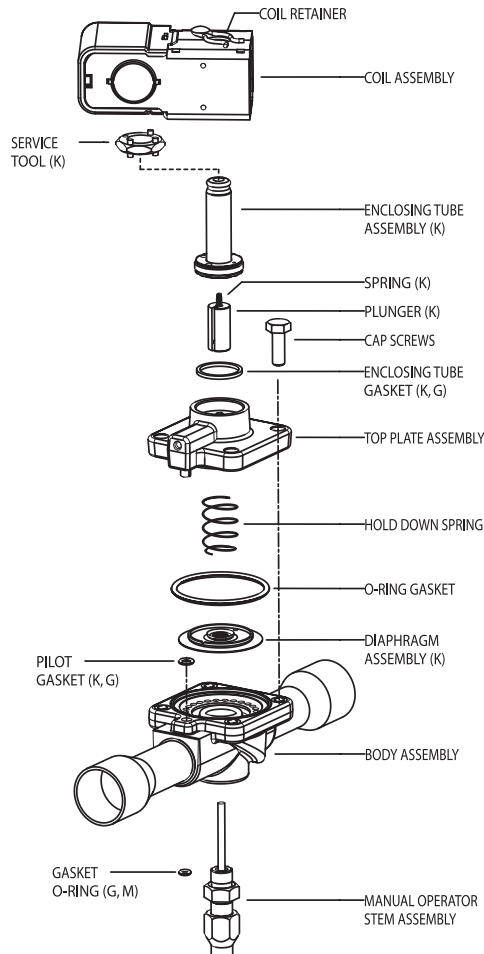
Extended capacity tables



EXPLODED VIEW & PARTS KIT DATA

240RA SERIES PART KITS

DESCRIPTION	MODEL NUMBER	ITEM NUMBER
Complete Kits		
200RA 8 Solenoid Valve Complete Kit (K)	KS-30321	060626
200RA 9 Solenoid Valve Complete Kit (K)	KS-30322	060627
240RA 12 Solenoid Valve Complete Kit (K)	KS-30323	060628
240RA 16 Solenoid Valve Complete Kit (K)	KS-30324	060629
240RA 20 Solenoid Valve Complete Kit (K)	KS-30325	060630
Manual Opener Kits		
240RA 8 Solenoid Valve Manual Opener Kit (M)	KS-30066	044657
240RA 9 and 240RA 12 Solenoid Valve Manual Opener Kit (M)	KS-30067	044658
240RA 16 Solenoid Valve Manual Opener Kit (M)	KS-30068	044491
240RA 20 Solenoid Valve Manual Opener Kit (M)	KS-30098	047723
Gasket Kits		
240RA and 540RA Gasket Kit (G)	KG-10028	054356
Tool Kits		
100RB, 240RA and 540RA Solenoid Valve Universal (2/3 hole) Spanner Wrench (Included in complete valve kit)	X-11981-1	027451
Magnetic Solenoid Tool opens a normally closed solenoid valve in the de-energized state, incorporates a spanner wrench for easy disassembly of solenoid valve series 100RB, 200RB, 240RA, and provides an orifice to manually adjust opening stem.	SOLENOID TOOL	066019



VALVE REPAIR KIT

(K) indicates part is supplied in valve repair kit.

MANUAL STEM KIT

(M) indicates part is supplied in manual stem kit

GASKET KIT

(G) indicates gasket is supplied in gasket kit.