



204CD 1/4S1/8BVLC

204CD SERIES INDUSTRIAL SOLENOID VALVES

The 204CD is a 2-way direct-acting unidirectional, normally closed valve for air, water and steam applications.

FEATURES

- Superior life with stainless steel enclosing tube
- Repair kits available
- Brass or stainless steel bodies
- 1/4" NPT Solenoid Valve

SPECIFICATIONS

Watts	12 AC, 15 DC
VA Inrush.....	31
VA Holding.....	19
Maximum working pressure	500 psi (35 bar)
Weight.....	1 lb. 3 oz.
UL/CUL file number	MP604

204CD SERIES INDUSTRIAL SOLENOID VALVES

DESCRIPTION	PORT SIZE (IN)	CONN. SIZE	MOPD ² AC	MOPD ² DC	CV	MAX. AC FLUID TEMP. ¹	ELASTOMER	SUGGESTED COIL ³	MODEL NUMBER	ITEM NUMBER
Brass General Purpose	3/32	1/4"	300	125	0.22	180°F	BUNA-N	AMG	204CD 1/4B3/32BVLC	030733
Brass General Purpose	1/8	1/4"	150	75	0.34	180°F	BUNA-N	AMG	204CD 1/4B1/8BVLC	056110
Brass General Purpose	5/32	1/4"	100	40	0.48	180°F	BUNA-N	AMG	204CD 1/4B5/32BVLC	030735
Brass General Purpose	1/4	1/4"	20	10	0.70	180°F	BUNA-N	AMG	204CD 1/4B1/4BVLC	030737
Brass Steam	5/32	1/4"	100	—	0.48	400°F	E.P. Seat	AMG 120V, 50/60	204CD 1/4B5/32PAMG2	064682
Stainless Steel General Purpose	3/32	1/4"	300	125	0.22	180°F	BUNA-N	AMG	204CD 1/4S3/32BVLC	030870
Stainless Steel General Purpose	1/8	1/4"	150	75	0.34	180°F	BUNA-N	AMG	204CD 1/4S1/8BVLC	030871
Stainless Steel Steam	3/64	1/4"	150	—	0.05	400°F	PTFE w/Ethylene Propylene Gaskets	AHG	204CD 1/4S3/64TVLC	030883
Stainless Steel Steam	1/8	1/4"	150	—	0.34	400°F	PTFE w/Ethylene Propylene Gaskets	AHG	204CD 1/4S1/8TVLC	030886
Stainless Steel Steam	5/32	1/4"	100	—	0.48	400°F	E.P. Seat	AMF 120V, 50/60	204CD 1/4S5/32PAMF2	053492

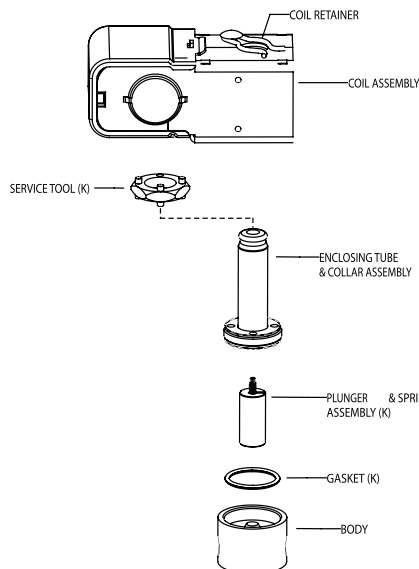
¹ With an ambient temperature of 77°F

² Maximum Operating Pressure Differential

³ Coil is included with valve if voltage is listed

VLC - See coil assemblies for availability

EXPLODED VIEW & PARTS KIT DATA



VALVE REPAIR KIT

(K) indicates part is supplied in valve repair kit.

204CD COMPLETE VALVE REPAIR KITS

SEAT MATERIAL	MODEL NUMBER	ITEM NUMBER
Buna-N	K-1072	021105
Buna-N (1/4 orifice only)	K-1162	039145
Viton	K-1074	021106
Rulon	K-1077	021107
Ethylene Propylene	K-1076	032154