

MRLDS-450 Avoiding an Open-Loop Fault Alarm Condition on Power Up

Technical Bulletin

Product: MRLDS-450 Gas Detector

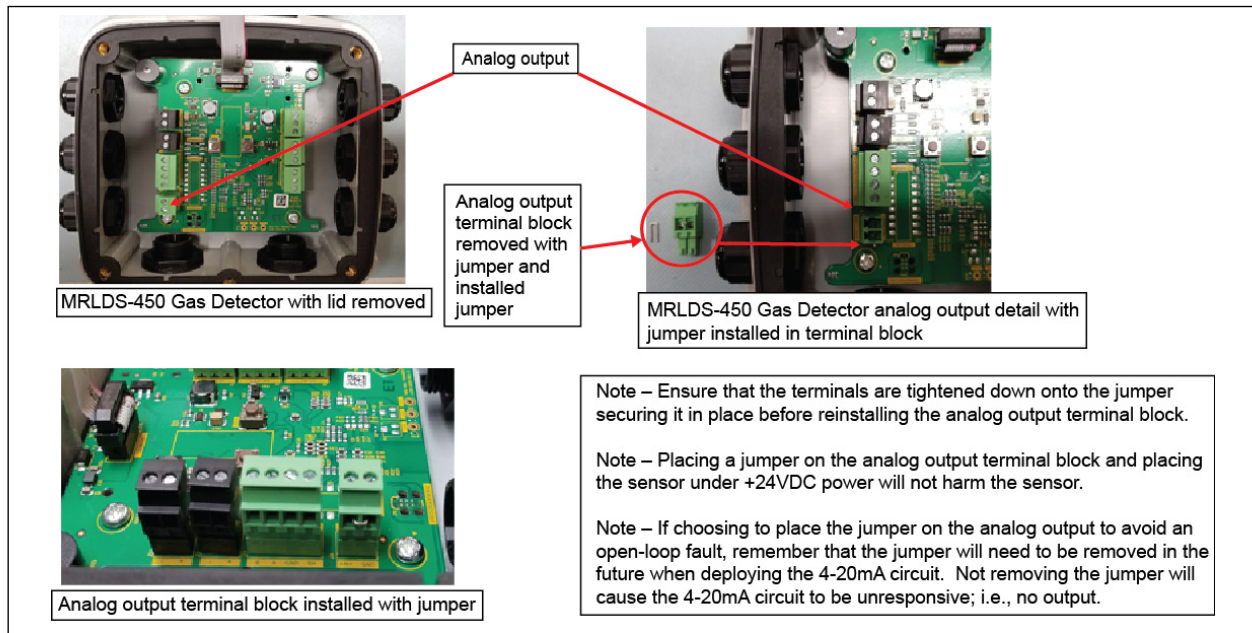
Issue: Avoiding Power Up Into An Open-Loop Fault

The MRLDS-450 Gas Detector by default has the analog output configured to 4-20mA. One of the features of the 4-20mA analog output is to alarm the sensor when an open-loop is detected on the 4-20mA circuit. If the +24VDC power is connected and the circuit is energized, the MRLDS-450 will detect an open-loop fault and alarm if:

- The 4-20mA circuit is not connected before the sensor is powered, or
- A jumper is not installed and tightened onto the analog output terminal block

Procedure

To avoid the open-loop fault on power up, the 4-20mA circuit can be deployed (wiring and configured to BMS or other) or install a jumper on the analog output terminal block as follows:



The fault can also be cleared by changing the Analog Output to a voltage (0-5V, 1-5V, 0-10V or 2-10V).

**NOTE that this technical bulletin is valid with the MRLDS-450 Quick Start Guide P/N 026-4417 Rev 1 ONLY.*

For Emerson Electronics and Solutions Technical Support

- 770-425-2724
- ColdChain.TechnicalServices@Emerson.com

This document may be photocopied for personal use.

Visit our website at <http://www.emerson.com> for the latest technical documentation and updates.

Join Emerson Technical Support on Facebook. <http://on.fb.me/WUQRnt>

For Technical Support call 770-425-2724 or email ColdChain.TechnicalServices@Emerson.com

The contents of this publication are presented for informational purposes only and they are not to be construed as warranties or guarantees, express or implied, regarding the products or services described herein or their use or applicability. Emerson Climate Technologies Retail Solutions, Inc. and/or its affiliates (collectively "Emerson"), reserves the right to modify the designs or specifications of such products at any time without notice. Emerson does not assume responsibility for the selection, use or maintenance of any product. Responsibility for proper selection, use and maintenance of any product remains solely with the purchaser and end-user.

026-4421 Emerson is a trademark of Emerson Electric Co. ©2020 Emerson Climate Technologies Retail Solutions, Inc. All rights reserved.

Document Part # 026-4421 Rev 0

